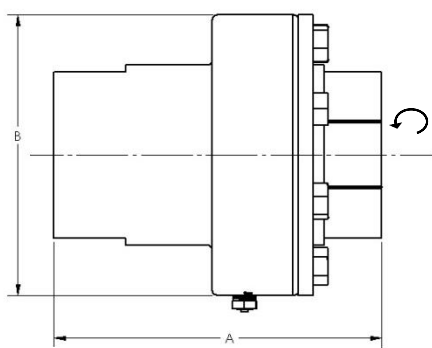
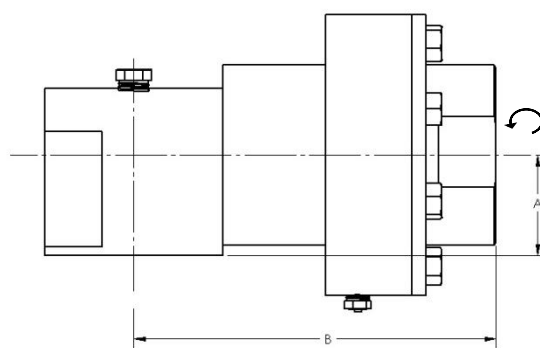


Swivels for DEF (AdBlue)



Straight-through type



90° type

 Denotes rotating end

Model Number	Configuration	Size	Threads	A	B	Weight
SMAC-112SSD	90-degree	1- 1/2 x 1- 1/2	Female	1- 3/4	6- 9/32	15- 1/2
SMAC-112STSSD	Straight-through	1- 1/2 x 1- 1/2	Female	5- 11/16	4- 7/8	11 - 3/4
SMAC-200SSD	90-degree	2 x 2	Female	1- 3/4	6- 9/32	15- 1/2
SMAC-200STSSD	Straight-through	2 x 2	Female	5- 11/16	4- 7/8	11- 3/4
SMAC-112200SSD	90-degree	1- 1/2 x 2	Female	1- 3/4	6- 9/32	15- 1/2
SMAC-200112SSD	90-degree	2 x 1- 1/2	Female	1- 3/4	6- 9/32	15- 1/2
SMAC-112200STSSD	Straight-through	1- 1/2 x 2	Female	5- 11/16	4- 7/8	11- 3/4
SMAC-200112STSSD	Straight-through	2 x 1- 1/2	Female	5- 11/16	4- 7/8	11- 3/4

For combination pipe sizes (Inlet x Outlet), rotating end is outlet. All dimensions in inches. Weight in pounds. All threads NPT.

Temperature range: -40°F to +250 °F
 Hydrostatic test pressure: 2000 psi
 Maximum working pressure: 400 psi

FULL-CIRCLE, INC.

P.O. Box 276, Newbury Park, CA 91319 USA
 1299 Lawrence Drive, Newbury Park, CA 91320 USA
 Telephone: 805/498-2589 Fax: 805/499-2867
 www.fullcircleswivels.com

